

Contents

The following Help Topics are available:

[What is WinExit](#)

[How to use WinExit](#)

[How to configure WinExit](#)

What is WinExit

WinExit is a screen saver that logs the current user off after the specified time has elapsed. It's similar to all other screen savers in that it can be configured through the Control Panel by selecting Desktop. Set the Delay value to a desired time to activate the screen saver. When the Delay time elapses WinExit displays a dialog box (see below) in which it displays the countdown timer and a user defined message. When the countdown timer reaches zero the logoff process will be initiated. During the countdown timer you can abort the process anytime by either moving the mouse over the dialog box or pressing any key on the keyboard.

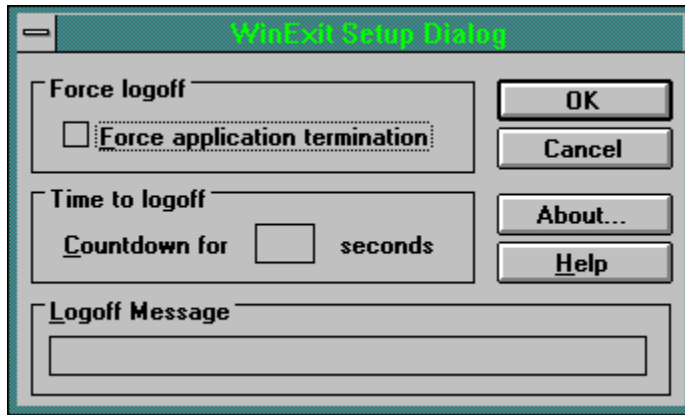


How to use WinExit

WinExit is like any other screen saver. It can be configured and tested using the Desktop applet in the Control Panel. When activated WinExit will beep, to indicate that logoff process is about to begin, and displays the logoff dialog box. If no action is taken and the countdown timer reaches zero, the system will initiate logoff procedure. At any given time before the countdown timer reaches zero you can abort the process by either moving the mouse pointer over the dialog box or pressing any key on the keyboard.

How to configure WinExit

Use the Setup... button in Control Panel.Desktop to configure WinExit. The following dialog represents the different options that WinExit offers. Click on the desired field for more information.



User Defined Message

This field allows you to enter a message, up to 255 characters, that will display in the logoff dialog box. If the message is longer than the specified length it will be truncated. To configure the message use the Setup... button in the Control Panel.Desktop.

Seconds to Logoff

WinExit is controlled by two timers, the main delay timer for Windows NT to activate the screen saver. The second timer is how long WinExit will wait before proceeding with system logoff procedure. If you want WinExit to logoff immediately after it's been activated by the system set the [Time to Logoff](#) value to zero (0).

The maximum value that can be entered is 999 seconds.

Force Logoff

By default, when a logoff process is initiated the system sends a message to each running application to whether any work needs to be saved. If the application responds with a yes then the system waits a period of time, otherwise the application is shutdown.

The default setting for WinExit does not change the above procedure. However, by using **Force Logoff** you can configure WinExit so that when the logoff process is initiated the system closes all running applications regardless of their current state.

Use this setting with caution since applications with unsaved data will not have a chance to save their work.

Time to Logoff

This field controls the time WinExit will display its logoff dialog box before proceeding with logoff process. It also gives you the chance to abort the logoff process. Enter a value between 0 and 999 which represents the time in seconds.

Logoff Message

This field allows you to enter a user defined message to display in the logoff dialog box. The message is limited to 255 characters and will be truncated if extra characters are entered.

